



COLLECTION ARANO

FABRIC TECHNICAL DATA

Composition: 100% Polyester

Material weight: 354 g/m²

Abrasion resistance: 35.000 cycles Martindale

Pilling resistance: 4

Lightfastness: 3-4

INSTRUCTIONS FOR CLEANING AND MAINTANANCE

CHARACTERISTICS:

- Very soft and nice in touch with chenille yarn
- Different shades of yarn and a relief structure
- Highly breathable, high comfort of use

MAINTENANCE:

The Arano fabric requires careful cleaning. We suggest very gentle cleaning with a soft nozzle. In case of any minor stains, the fabric should be wiped quickly with a dry cloth. Avoid rubbing against a damp surface. The fabric is not washable.

A thorough cleaning or removing substantial dirt should be assigned to professional maintenance services companies.

A proper maintenance of the fabric is one of key warranty conditions; any treatments damaging the fabric surface constitute grounds for the rejection of possible complaints.

Shades of fabric swatches and those of a furniture covering may vary slightly.



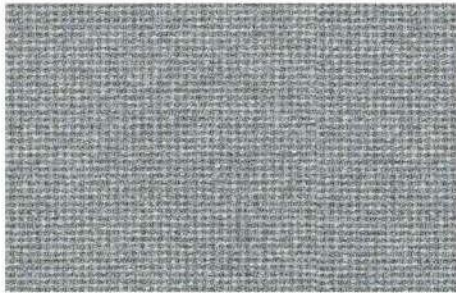
Arano 06



Arano 07



Arano 08



Arano 09



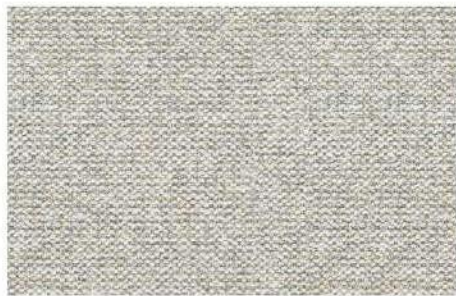
Arano 11



Arano 12



Arano 14



Arano 15



Arano 17



Arano 19



Arano 24

COLLECTION CASTLE

FABRIC TECHNICAL DATA

Fabric composition: 97% Polyester, 3% Cotton
Material weight: 370 g/m²
Abrasion resistance: 25.000 cycles Martindale
Pilling resistance: 4
Lightfastness: 4

INSTRUCTIONS FOR CLEANING AND MAINTANANCE

CHARACTERISTICS:

- Soft fabric, nice to touch
- Gentle texture and melange of colors give a noble, rustic look
- Highly breathable, high comfort of use

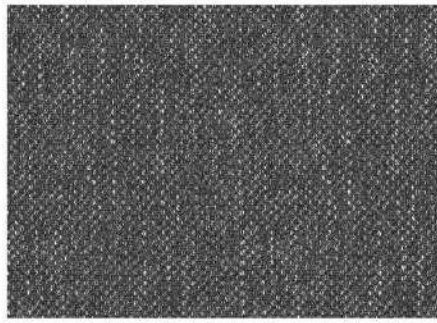
MAINTENANCE:

The Castle fabric requires careful cleaning. A gentle vacuuming with a soft nozzle is recommended. The fabric does not have a chemical finish protecting it against water absorption and dirt. In case any slight stains appear, wipe the fabric immediately with a dry cloth. Avoid rubbing against a damp fabric. The fabric is not washable. A thorough cleaning or removing substantial dirt should be entrusted to professional maintenance services companies. A proper maintenance of the fabric is one of key warranty conditions, any treatments damaging the fabric surface constitute the grounds for the rejection of possible complaints.

Shades of fabric swatches and those of the furniture covering may vary slightly.



Castle 12



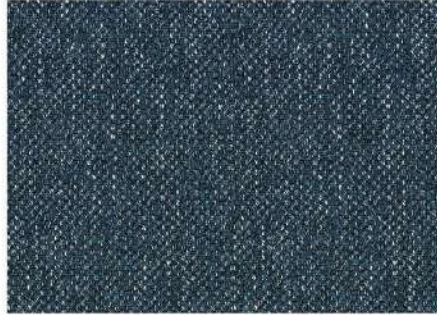
Castle 14



Castle 15



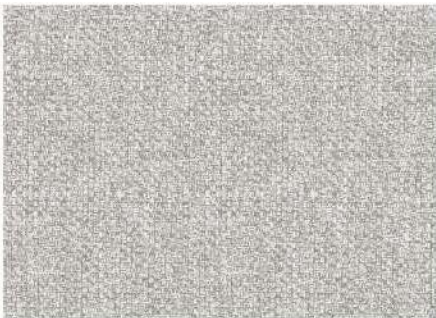
Castle 24



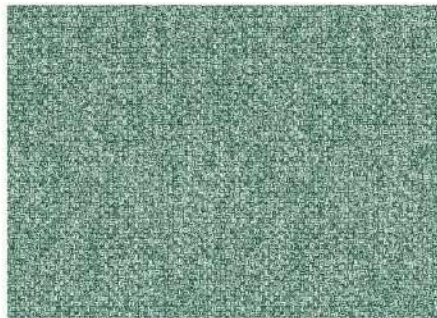
Castle 48



Castle 53



Castle 60



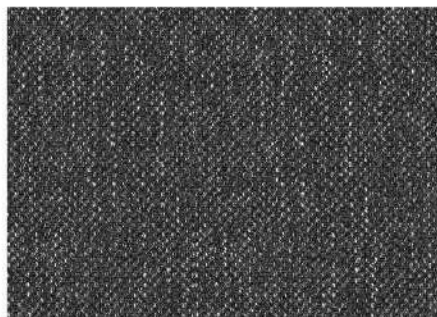
Castle 143



Castle 153



Castle 160



Castle 165



Castle 166

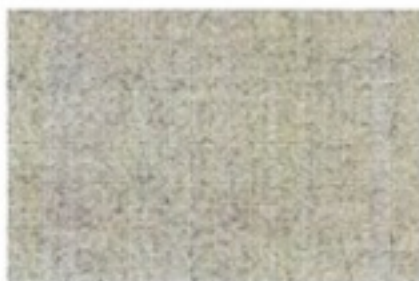


Castle 168

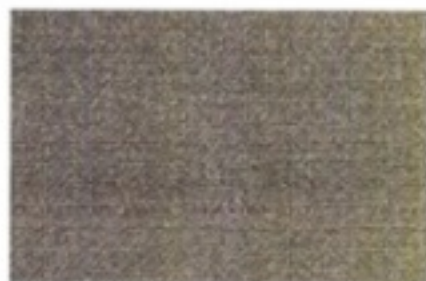
CAT 2



Dakar 10



Dakar 22



Dakar 64



Dakar 71



Dakar 74



Dakar 88



COLLECTION DAKOTA

FABRIC TECHNICAL DATA

Fabric composition: 100% Polyester
Material weight: 480 g/m²
Abrasion resistance: 25.000 cycles Martindale
Pilling resistance: 4-5
Lightfastness: 4

INSTRUCTIONS FOR CLEANING AND MAINTANANCE

CHARACTERISTICS:

- Very soft fabric, nice to touch
- Subtle irregular pattern imitating genuine leather
- Highly breathable, high comfort of use
- Does not attract dust, pilling resistant

MAINTENANCE:

A gentle vacuuming with a soft nozzle is recommended. The Dakota fabric does not have a chemical finish protecting it against water absorption and dirt. In case any slight stains appear, wipe the fabric immediately with a dry cloth. Avoid rubbing against a damp fabric. The fabric is not washable.

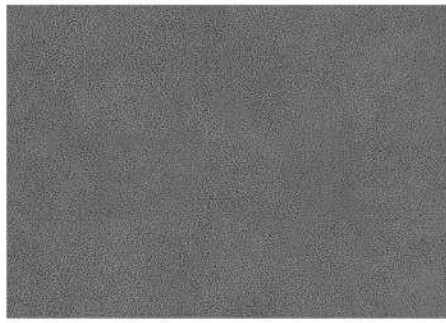
A thorough cleaning or removing substantial dirt should be entrusted to professional maintenance services companies.

A proper maintenance of the fabric is one of key warranty conditions, any treatments damaging the fabric surface constitute the grounds for the rejection of possible complaints.

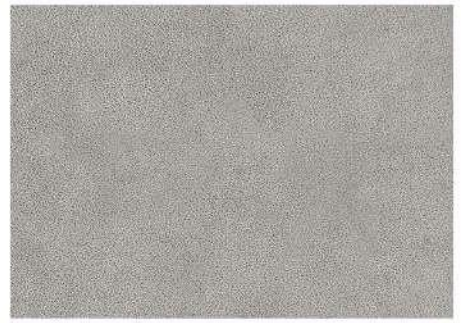
Shades of fabric swatches and those of the furniture covering may vary slightly.



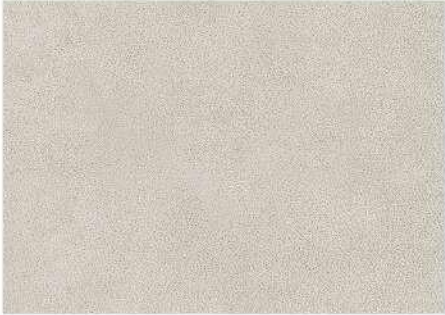
Dakota 1



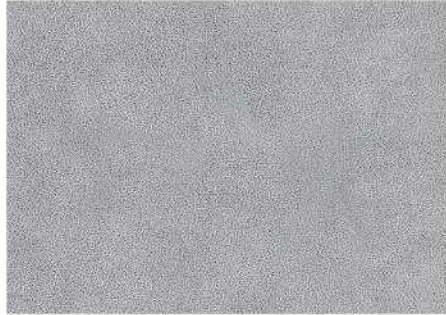
Dakota 2



Dakota 4



Dakota 5



Dakota 6



Dakota 10



Dakota 14

Fabric composition: 100% Polyester
Material weight: 410 g/m²
Abrasion resistance: 80.000 cycles Martindale
Pilling resistance: 5
Lightfastness: 4-5

INSTRUCTIONS FOR CLEANING AND MAINTANANCE

CHARACTERISTICS:

- Very soft velvet, nice to touch
- Elegant material with a velvety, gently shading texture
- Perfectly matches stylish and modern furniture
- Highly breathable, high comfort of use

MAINTENANCE:

During use the fibers on the fabric surface can stack in different directions what triggers shading effect. We recommend gentle cleaning with a soft brush, always following the original direction of the fiber. The fabric is not washable. In case of wet stains, remove the dirt quickly with a dry cloth and allow the fabric to dry. While drying take care that the fibers cover is arranged in the right direction. Do not rub the fabric!

A thorough cleaning or removing substantial dirt should be entrusted to professional maintenance services companies.

A proper maintenance of the fabric is one of key warranty conditions; any treatments damaging the fabric surface constitute grounds for the rejection of possible complaints. Shades of fabric swatches and those of the furniture covering may vary slightly.



Dolce 01



Dolce 02



Dolce 03



Dolce 04



Dolce 05



Dolce 06



Dolce 08



Dolce 10



Dolce 11



Dolce 12



Dolce 13



Dolce 14



Dolce 15



Dolce 17

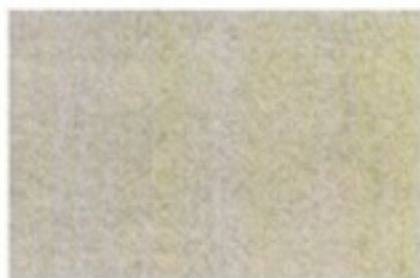
CAT 2



Fano 03



Fano 04



Fano 06



Fano 07



Fano 10



Fano 11



Fano 22



COLLECTION FORTE

FABRIC TECHNICAL DATA

Fabric composition: 100% Polyester
Material weight: 400 g/m²
Abrasion resistance: 50.000 cycles Martindale
Pilling resistance: 4
Lightfastness: 5

INSTRUCTIONS FOR CLEANING AND MAINTANANCE

CHARACTERISTICS:

- Very soft fabric with chenille thread, nice to touch
- Different shades of weft and warp give the fabric original look
- Highly breathable, high comfort of use

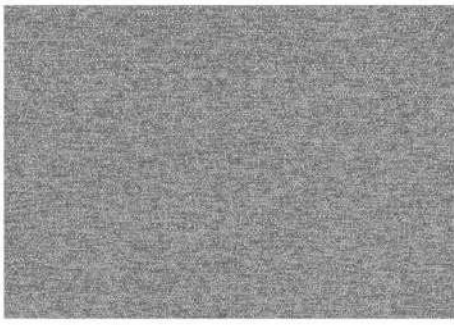
MAINTENANCE:

The Forte fabric requires careful cleaning. A gentle vacuuming with a soft nozzle is recommended. The fabric does not have a chemical finish protecting it against water absorption and dirt. In case any slight stains appear, wipe the fabric immediately with a dry cloth. Avoid rubbing against a damp fabric. The fabric is not washable.

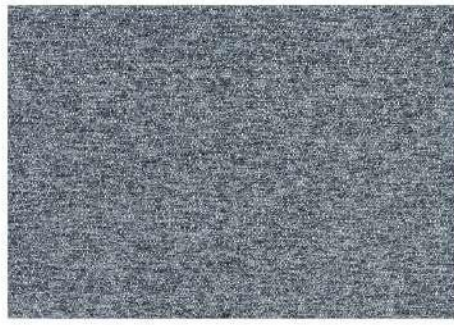
A thorough cleaning or removing substantial dirt should be entrusted to professional maintenance services companies.

A proper maintenance of the fabric is one of key warranty conditions, any treatments damaging the fabric surface constitute grounds for the rejection of possible complaints.

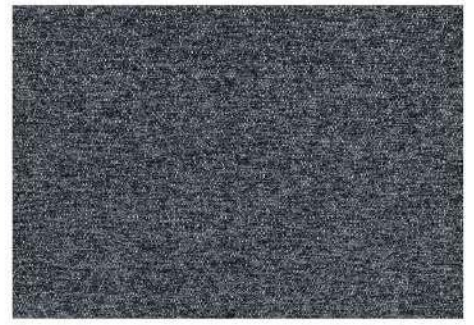
Shades of fabric swatches and those of the furniture covering may vary slightly.



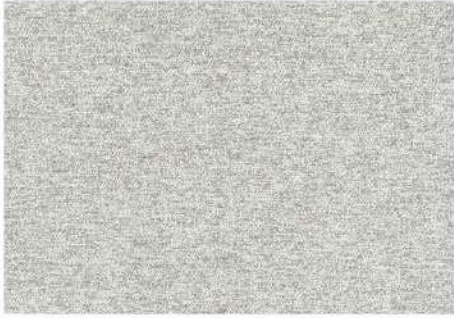
Forte 06



Forte 10



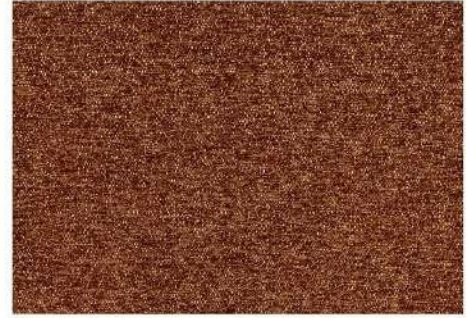
Forte 16



Forte 22



Forte 28



Forte 44



Forte 66

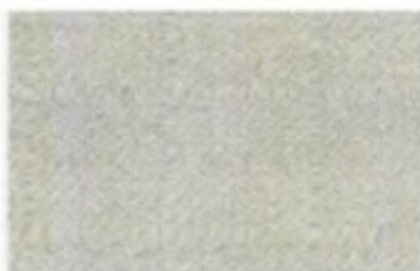


Forte 86

CAT 2



Imperia 01



Imperia 03



Imperia 09



Imperia 20



Imperia 120



Imperia 145



Imperia 170



Imperia 260



Imperia 520



Imperia 751

COLLECTION LAGO

FABRIC TECHNICAL DATA

Fabric composition: 100% Polyester
Material weight: 493 g/m²
Abrasion resistance: 80.000 cycles Martindale
Pilling resistance: 4-5
Lightfastness: 4

INSTRUCTIONS FOR CLEANING AND MAINTANANCE

CHARACTERISTICS:

- Soft fabric, nice to touch
- Irregular embossed relief imitating genuine leather
- Highly breathable, high comfort of use
- Does not attract dust, pilling resistant

MAINTENANCE:

A gentle vacuuming with a soft nozzle is recommended. The Lago fabric does not have a chemical finish protecting it against water absorption and dirt. In case any slight stains appear, wipe the fabric immediately with a dry cloth. Avoid rubbing against a damp fabric. The fabric is not machine washable. A thorough cleaning or removing substantial dirt should be entrusted to professional maintenance services companies. A proper maintenance of the fabric is one of key warranty conditions, any treatments damaging the fabric surface constitute the grounds for the rejection of possible complaints.

Shades of fabric swatches and those of the furniture covering may vary slightly.



Lago 01



Lago 02



Lago 03



Lago 04



Lago 05



Lago 06



Lago 07



Lago 08



Lago 09



Lago 10



COLLECTION LINDA

FABRIC TECHNICAL DATA

Fabric composition: 94% Polyester, 6% Nylon
Material weight: 350 g/m²
Abrasion resistance: 50.000 cycles Martindale
Pilling resistance: 4-5
Lightfastness: 3-4

INSTRUCTIONS FOR CLEANING AND MAINTANANCE

CHARACTERISTICS:

- Very soft fabric, nice to touch
- Gentle, relief structure and natural colors gives it a noble look
- Highly breathable, high comfort of use

MAINTENANCE:

A very gentle vacuuming with a soft nozzle is recommended. The Linda fabric has a wet-stain-repellent finish that protects it from water absorption. In case any wet stains appear, wipe the fabric immediately with a dry cloth. Avoid rubbing against a damp fabric. The fabric is not machine washable.

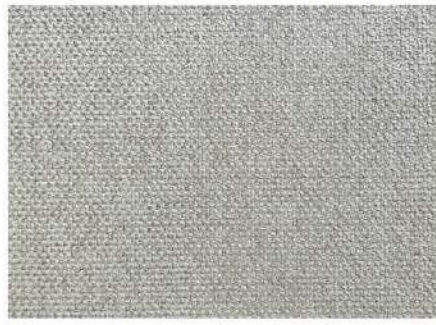
A thorough cleaning or removing substantial dirt should be entrusted to professional maintenance services companies.

A proper maintenance of the fabric is one of key warranty conditions; any treatments damaging the fabric surface constitute grounds for the rejection of possible complaints.

Shades of fabric swatches and those of the furniture covering may vary slightly.



Linda 01



Linda 02



Linda 03



Linda 04



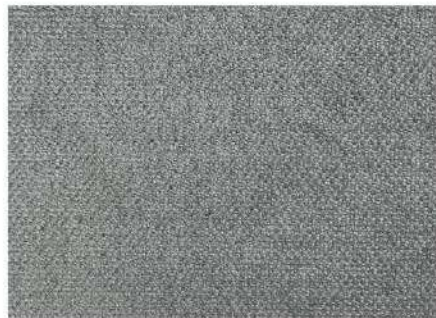
Linda 05



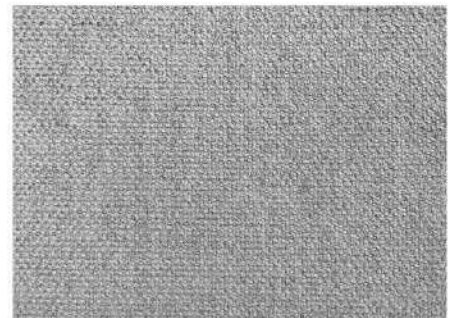
Linda 07



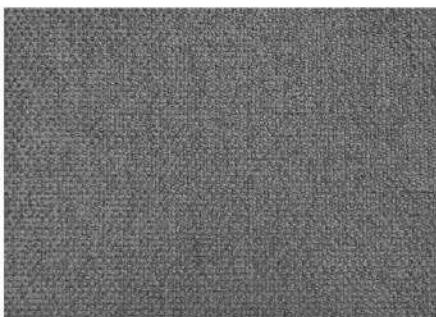
Linda 13



Linda 14



Linda 17



Linda 18



Linda 24

CAT 2



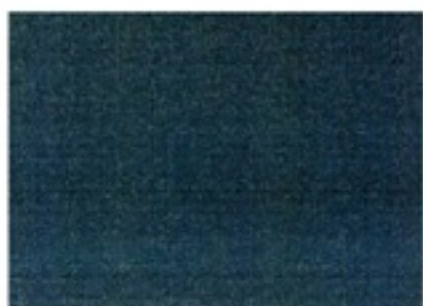
Madera 01



Madera 02



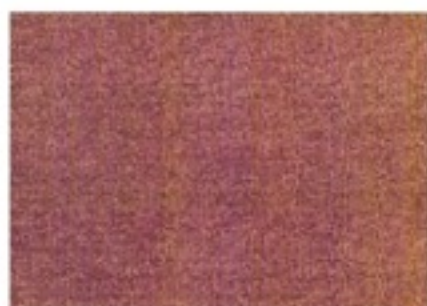
Madera 03



Madera 06



Madera 09



Madera 12



Madera 15



Madera 17

CAT 1



Monte Carlo 01



Monte Carlo 20



Monte Carlo 223



Monte Carlo 245



Monte Carlo 296



Monte Carlo 443



Monte Carlo 445



Monte Carlo 505



Monte Carlo 808

CAT 2



Oro 01



Oro 02



Oro 03



Oro 07



Oro 08



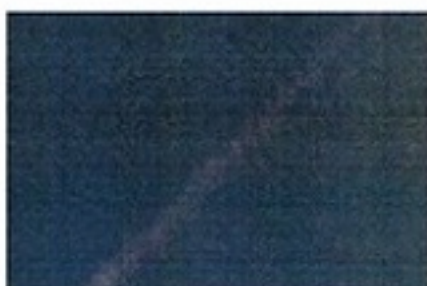
Oro 11



Oro 13



Oro 17



Oro 18



Oro 22



Oro 24



Oro 25



COLLECTION RIVER

FABRIC TECHNICAL DATA

Fabric composition: 100% Polyester

Material weight: 400 g/m²

Abrasion resistance: 23.000 cycles Martindale

Pilling resistance: 4

Lightfastness: 4

INSTRUCTIONS FOR CLEANING AND MAINTANANCE

CHARACTERISTICS:

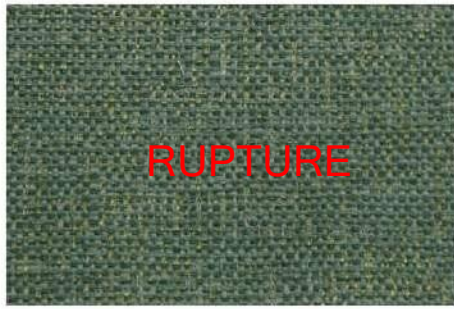
- Very soft fabric with chenille thread, nice to touch
- Structural surface and melange yarn give it a noble look
- Highly breathable, high comfort of use

MAINTENANCE:

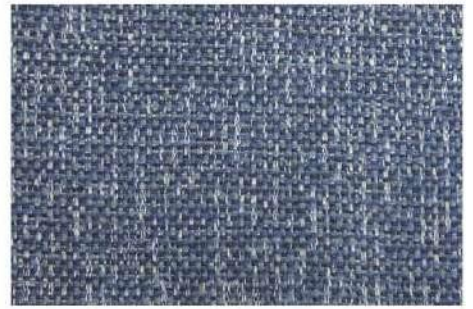
The River fabric requires careful cleaning. We suggest very gentle cleaning with a soft nozzle. In case of any minor stains, the fabric should be wiped quickly with a dry cloth. Avoid rubbing against a damp surface. The fabric is not washable. A thorough cleaning or removing substantial dirt should be assigned to professional maintenance services companies. A proper maintenance of the fabric is one of key warranty conditions; any treatments damaging the fabric surface constitute grounds for the rejection of possible complaints. Shades of fabric swatches and those of a furniture covering may vary slightly.



River 02



River 16



River 20



River 22



River 56



River 65



River 66

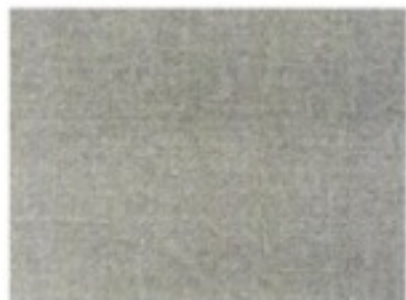


River 80



River 83

CAT 1



Ruby 03



Ruby 06



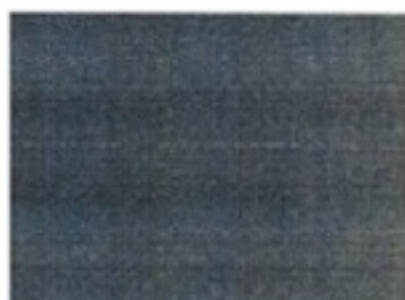
Ruby 09



Ruby 10



Ruby 16



Ruby 18



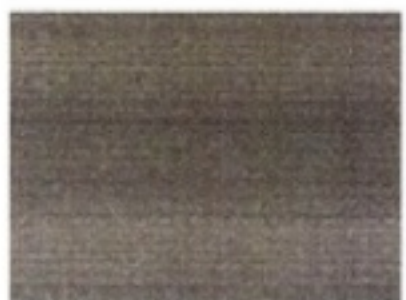
Ruby 22



Ruby 24



Ruby 26



Ruby 30

COLLECTION SAJMA

FABRIC TECHNICAL DATA

Fabric composition: 100% Polyester
Material weight: 410 g/m²
Abrasion resistance: 100.000 cycles Martindale
Pilling resistance: 4
Lightfastness: 5

INSTRUCTIONS FOR CLEANING AND MAINTANANCE

CHARACTERISTICS:

- Very soft, structured chenille fabric, nice to touch
- Thick weave and subtle brilliance give the fabric an original look
- Highly breathable, high comfort of use

MAINTENANCE:

The Sajma fabric requires careful cleaning. A gentle vacuuming with a soft nozzle is recommended. The fabric does not have a chemical finish protecting it against water absorption and dirt. In case any slight stains appear, wipe the fabric immediately with a dry cloth. Avoid rubbing against a damp fabric. The fabric is not washable.

A thorough cleaning or removing substantial dirt should be entrusted to professional maintenance services companies.

A proper maintenance of the fabric is one of key warranty conditions, any treatments damaging the fabric surface constitute the grounds for the rejection of possible complaints.

Shades of fabric swatches and those of the furniture covering may vary slightly.



Sajma 03



Sajma 06



Sajma 07



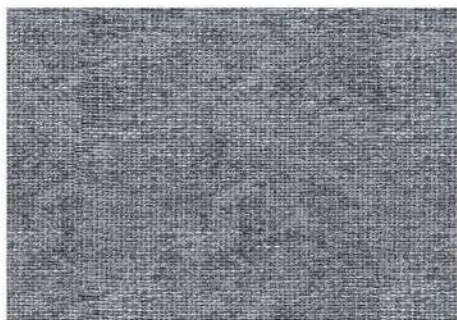
Sajma 11



Sajma 12



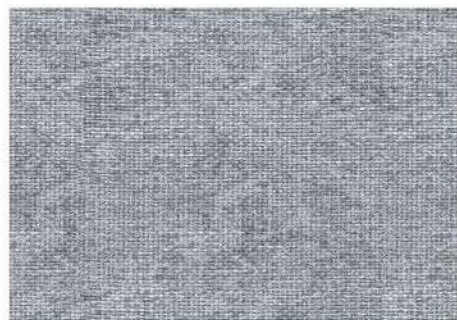
Sajma 15



Sajma 17



Sajma 18



Sajma 20

CAT 1



San Remo 01



San Remo 03



San Remo 06



San Remo 12



San Remo 16



San Remo 17



San Remo 18



San Remo 20

COLLECTION SINTRA

FABRIC TECHNICAL DATA

Fabric composition: 100% Polyester

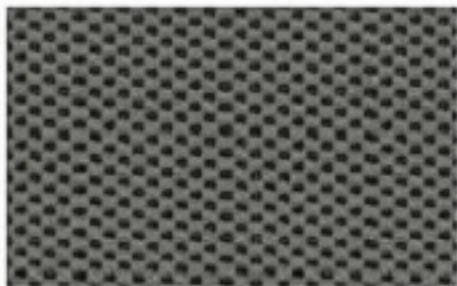
Material weight: 550 g/m²

Abrasion resistance: 120.000 cycles Martindale

Pilling resistance: 5



Sintra 31



Sintra 40



Sintra 04

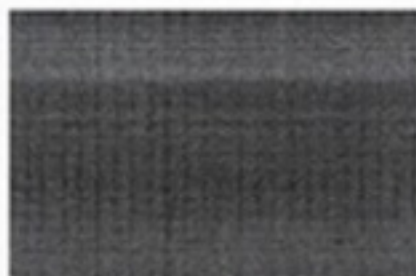


Sintra 68

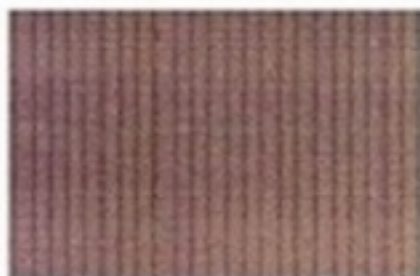
CAT 1



Tellaro 03



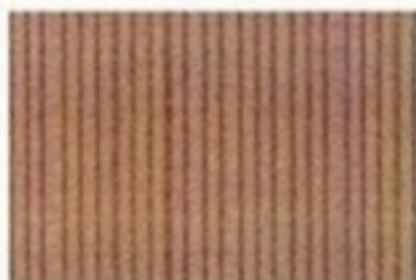
Tellaro 22



Tellaro 29



Tellaro 40



Tellaro 42



Tellaro 46



Tellaro 47



Tellaro 55



Tellaro 100